

NOMEX® ESSENTIAL 6 OZ INSULATED PARKA



SHELL

- 6 oz - 93% Nomex® Essential, 5% Kevlar, and 2% carbon added for improved anti-static performance
- Material is inherently flame resistant
- No melt, no drip velcro
- Lowered X striping on back to allow room for company logo or hooded undergarment**
- FR fleece lined hand pockets
- Nomex® Essential fabric meets the requirements of: NFPA 2112, CGSB 155.20, NFPA 1977, CGSB 155.22, NFPA 70E, CSA Z462, ASTM F1506

INSULATION PACKAGE - 12 OZ QUILTED

- Wind and vapour barrier
- Modacrylic insulation (flame resistant)
- 88% cotton, 12% high-tenacity nylon-lining

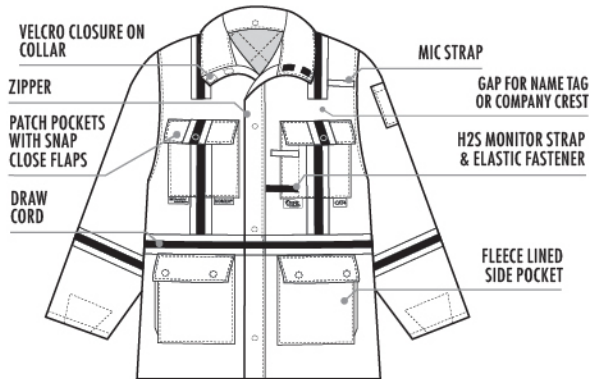
STOCK SIZES

| | | | | | | | |
|-----|---|-----|----|-----|------|------|------|
| XS* | S | M | L | XL | 2XL | 3XL | 4XL |
| - | - | MT* | LT | XLT | 2XLT | 3XLT | 4XLT |

STOCK COLOURS



*May be a non-stocked item, please call for availability.
 **Hood provision was added to the CSA Z96-15 standard.



Nomex® essential is a registered trademark of DuPont™ used under license by IFR Workwear Inc. 3M™ and Scotchlite™ are trademarks of 3M™ used under license by IFR Workwear Inc. in Canada.



THE TRUSTED LEADER IN QUALITY FLAME AND ARC RESISTANT WORKWEAR

IFRWORKWEAR.CA | 403-347-5480 | INFO@IFRWORKWEAR.CA