

Style 218 - Indura® 9 oz Insulated Parka

Trim Featuring 3M™ Scotchlite™ Reflective Material

SHELL:

- 9 oz. - 100% FR Cotton from Westex™
- Engineered for flame resistance and guaranteed for the life of the garment
- Breakaway zipper
- No melt, no drip Velcro®
- Lowered X striping on back to allow more room for company logo or hooded undergarment**
- Indura® fabric meets the requirements of:
NFPA 2112, NFPA 70E, CSA Z462, ASTM F1506, OSHA 1910.269, CGSB 155.20

INSULATION:

- 7 oz. FR Modacrylic insulation
- Wind / vapour barrier

LINING:

- 7 oz. 100% FR Cotton



STOCK COLOURS:



Insulated Parka Hood

(UltraSoft® Hood - UPB265)

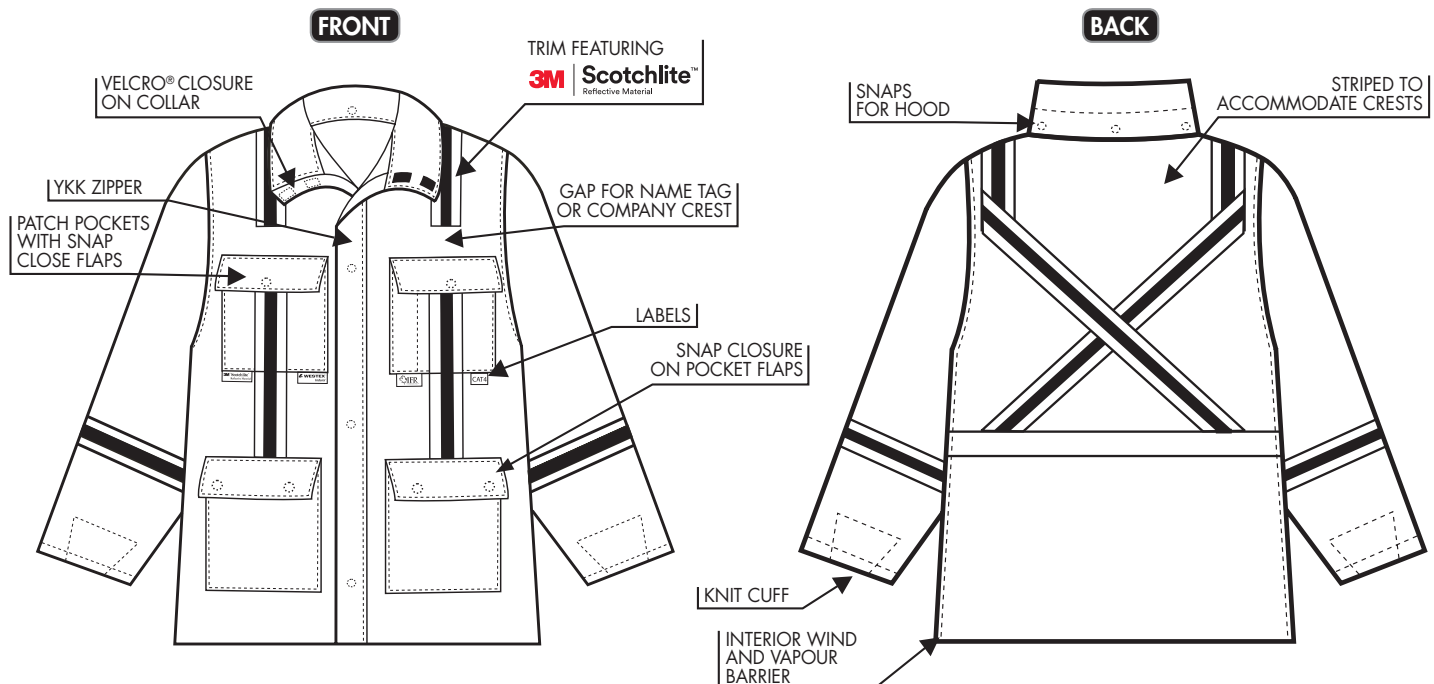
UltraSoft® hoods are designed to attach to our Indura® Parkas, and fit over hard hats for flame resistance and maximum protection against the elements. The unique design provides maximum peripheral vision. **ONE SIZE FITS ALL**



STOCK SIZES:

S	M	L	XL	2XL	3XL	4XL
-	-	LT	XLT	2XLT	3XLT	4XLT

**Hood provision is added to the new CSA Z96-15 Standard.



Westex™ Indura® is a registered trademark of Westex® by Milliken™ used under license by IFR Workwear Inc. 3M™ and Scotchlite™ are trademarks of 3M™ used under license by IFR Workwear Inc. in Canada.

THE TRUSTED LEADER IN QUALITY FLAME AND ARC RESISTANT WORKWEAR